

HEALTH WORLD SERVICE

BUSINESS SECTORS

The Company has identified and developed a series of activities, providing integrated services to states, to companies, both public and private. The scope of the Company moves in several sectors: from planning to technical advice, analysis and the deepening of regulatory aspects, environmental and techno-economic, relating to sanitary engineering projects. In this compound the Company this makes use of an internal structure of professionals and highly skilled engineers as well as an established network of freelancers, who they work in full sharing of procedural and operational criteria. The company collaborates with established professional firms , construction companies , engineering companies , research organizations and universities.

The wide network of reference , the result of consolidated personal and work relationships , ensures a constant and fruitful exchange of knowledge , expertise and resources. Also it helps to make cutting-edge services offered in terms of quality and excellence .The operational approach adopted enables , in particular , to dispose of essential interdisciplinary individual skills in an integrated way to deal with every technical aspects, regulatory and administrative. Each process is also carried out to ensure the technical and operational coordination to guarantee the achievement of high quality standards and internal consistency between the different sections that compose the documentary processed resulting from the activity. The analysis of the health needs associated with the scientific, technological and architectural lay the foundations for the development of a project of a health facility.

This is conceived , designed , developed , built and organized according to the primary principle of safeguarding human health and the protection of life

The Company develops its activity in the marketing of drugs and medical devices , medical equipment , electro medical, prosthetic aids and all that is necessary for the organization of medical and specialist asset or medical. The Company also deals with occupational health and safety at work . It offers advice to ensure the proper fulfillment of all legal requirements relating to health , hygiene and safety in the workplace. This ensures simple and effective solutions and programs to improve working conditions and reduce the risk of accidents. The Company World Service designs and implements continuing education courses and scientific and technological upgrading aimed at companies and professionals, in particular within health. The training includes classroom courses with release of credits , courses and specialization even at a distance and professional qualification courses.

VELAS LARGAS, HEALTH CARE EQUIPAMENT

Rua Dr. António Martins, Número 44, 2º Esq, Benfica, Lisboa, na freguesia de São Domingos de Benfica, Portugal

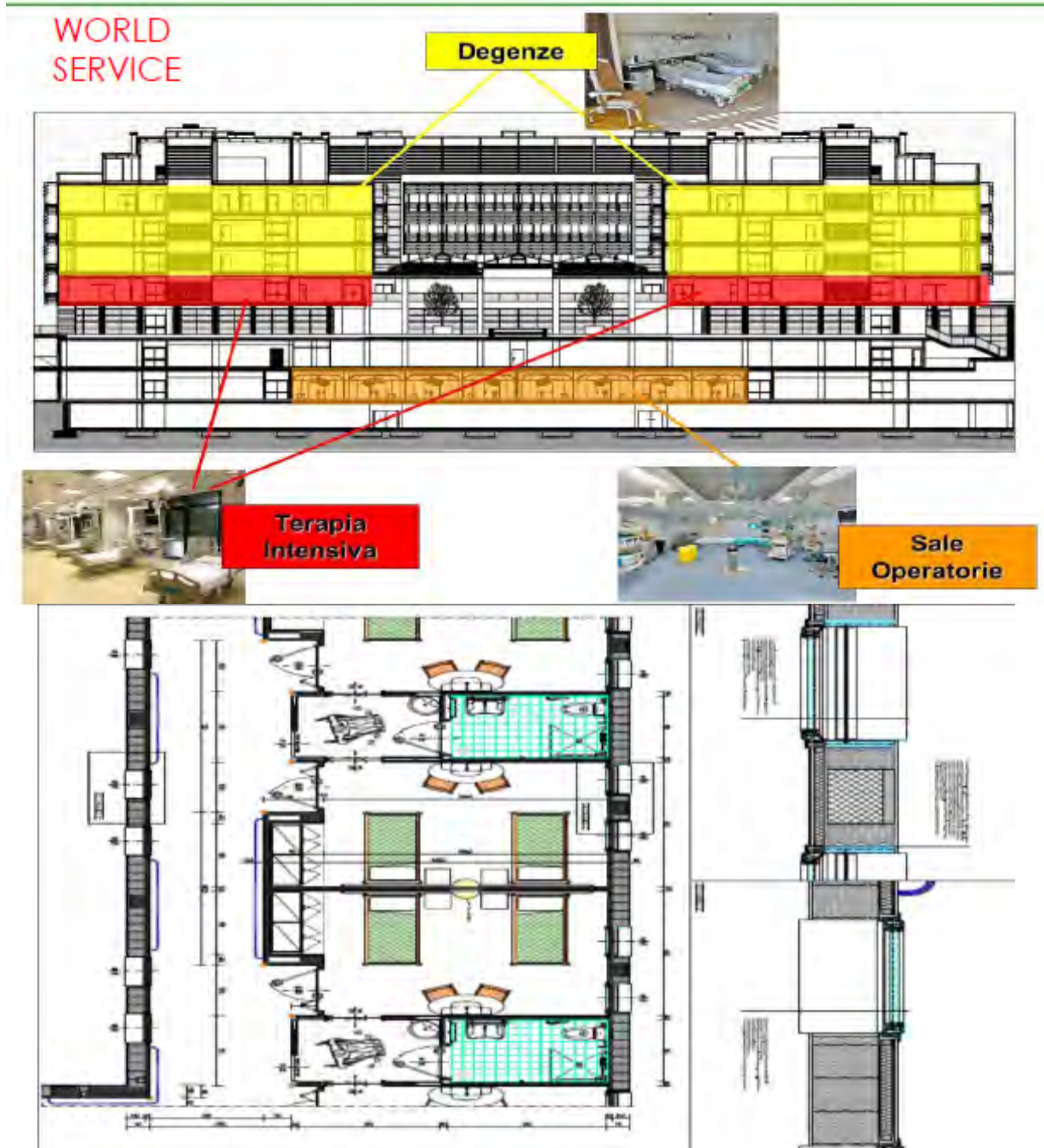
Email: info@velaslargas.com

Website: www.velaslargas.com



VELAS LARGAS
HEALTH CARE EQUIPAMENT

HEALTHPLANNING

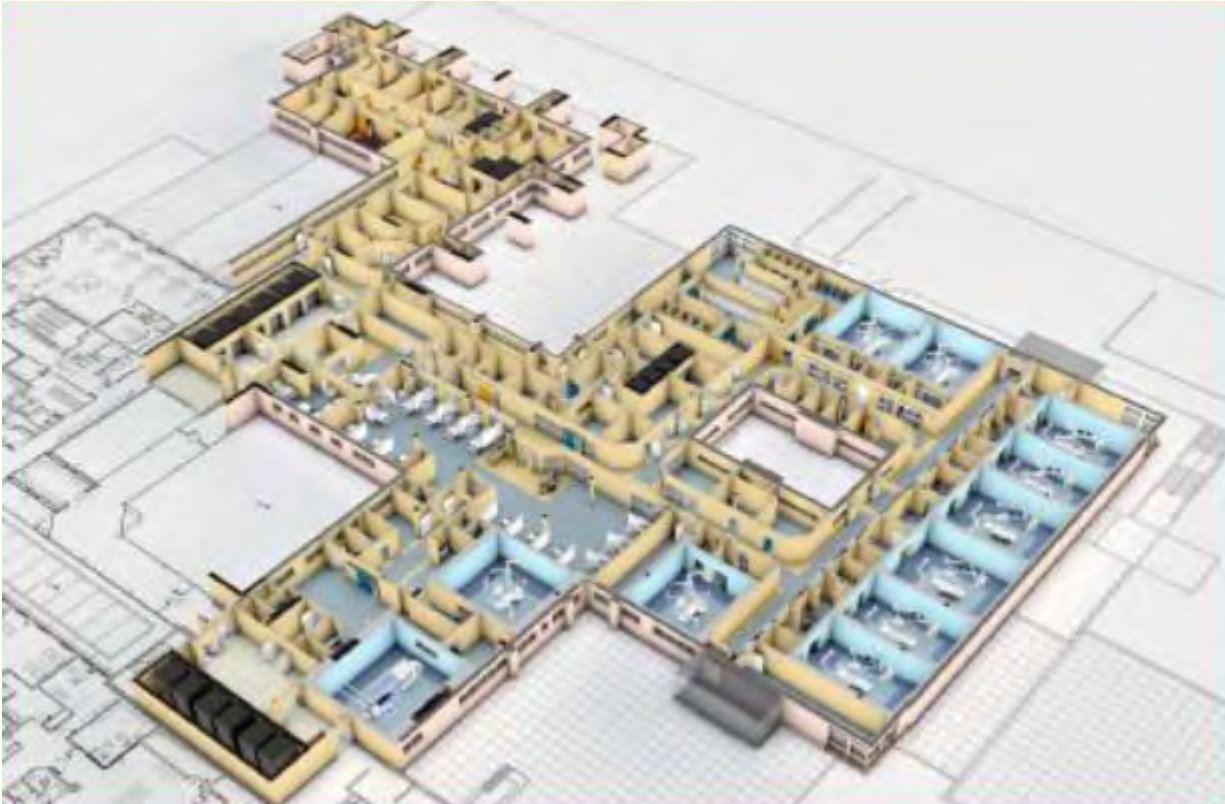


VELAS LARGAS, HEALTH CARE EQUIPAMENT

Rua Dr. António Martins, Número 44, 2º Esq, Benfica, Lisboa, na freguesia de São Domingos de Benfica, Portugal
Email: info@velaslargas.com
Website: www.velaslargas.com



VELAS LARGAS
HEALTH CARE EQUIPAMENT



VELAS LARGAS, HEALTH CARE EQUIPAMENT

*Rua Dr. António Martins, Número 44, 2º Esq, Benfica, Lisboa, na freguesia de São Domingos de Benfica, Portugal
Email: info@velaslargas.com
Website: www.velaslargas.com*



VELAS LARGAS
HEALTH CARE EQUIPAMENT



VELAS LARGAS, HEALTH CARE EQUIPAMENT

*Rua Dr. António Martins, Número 44, 2º Esq, Benfica, Lisboa, na freguesia de São Domingos de Benfica, Portugal
Email: info@velaslargas.com
Website: www.velaslargas.com*



VELAS LARGAS
HEALTH CARE EQUIPAMENT



VELAS LARGAS, HEALTH CARE EQUIPAMENT

*Rua Dr. António Martins, Número 44, 2º Esq, Benfica, Lisboa, na freguesia de São Domingos de Benfica, Portugal
Email: info@velaslargas.com
Website: www.velaslargas.com*



VELAS LARGAS
HEALTH CARE EQUIPAMENT



VELAS LARGAS, HEALTH CARE EQUIPAMENT

*Rua Dr. António Martins, Número 44, 2º Esq, Benfica, Lisboa, na freguesia de São Domingos de Benfica, Portugal
Email: info@velaslargas.com
Website: www.velaslargas.com*



VELAS LARGAS
HEALTH CARE EQUIPMENT



VELAS LARGAS, HEALTH CARE EQUIPMENT

Rua Dr. António Martins, Número 44, 2º Esq, Benfica, Lisboa, na freguesia de São Domingos de Benfica, Portugal

Email: info@velaslargas.com

Website: www.velaslargas.com



VELAS LARGAS
HEALTH CARE EQUIPAMENT



VELAS LARGAS, HEALTH CARE EQUIPAMENT

Rua Dr. António Martins, Número 44, 2º Esq, Benfica, Lisboa, na freguesia de São Domingos de Benfica, Portugal
Email: info@velaslargas.com
Website: www.velaslargas.com



VELAS LARGAS
HEALTH CARE EQUIPMENT



VELAS LARGAS, HEALTH CARE EQUIPMENT

Rua Dr. António Martins, Número 44, 2º Esq, Benfica, Lisboa, na freguesia de São Domingos de Benfica, Portugal
Email: info@velaslargas.com
Website: www.velaslargas.com



VELAS LARGAS
HEALTH CARE EQUIPMENT



Your e-touch

Touch devices make it easier for patients to interact with their care. Patients and visitors can find answers and get help without leaving their beds. Our e-touch solution is the perfect way to do this.

Wireless Ultrasound

MyLisAlpha

- Wireless system capabilities: freedom, portability, easy to use
- Fully compliant, standard protocol
- Full FDA and CE compliance

Top Performance Ultrasound, anytime and anywhere

MyLisAlpha

... (small text describing features) ...

e saote

Exclusive Premium Performance

iQProbes

... (small text describing features) ...

VELAS LARGAS, HEALTH CARE EQUIPMENT

Rua Dr. António Martins, Número 44, 2º Esq, Benfica, Lisboa, na freguesia de São Domingos de Benfica, Portugal

Email: info@velaslargas.com

Website: www.velaslargas.com



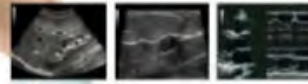
VELAS LARGAS
HEALTH CARE EQUIPMENT

Whenever you need to make **EASY** use of a Powerful, Compact Ultrasound system...



Modularity
Versatility
Compactness
Clinical Confidence

Technologies and Dedicated Solutions to Meet any Clinical Need



Open-platform for today's users demands

MyLabFive offers a fully open platform for integration, allowing users to connect with their existing IT infrastructure and workflow.



MyLabFive

Mobile solutions:



Model	Screen Size	Weight	Dimensions
MyLabFive	15.5"	4.5 kg	420 x 350 x 150 mm
MyLabFive	13.3"	3.5 kg	350 x 300 x 120 mm
MyLabFive	10.4"	2.5 kg	280 x 250 x 100 mm



Selenia Dimensions™
Una visione più profonda

HOLOGIC™



Selenia Dimensions™
Imaging della mammella 2D e 3D a 40 kVp.

Il nuovo 40 kVp system per la Selenia Dimensions mammography machine. Questo sistema è stato progettato per migliorare la qualità delle immagini e ridurre il rischio di errore.

Il nuovo 40 kVp system per la Selenia Dimensions mammography machine. Questo sistema è stato progettato per migliorare la qualità delle immagini e ridurre il rischio di errore.

Il nuovo 40 kVp system per la Selenia Dimensions mammography machine. Questo sistema è stato progettato per migliorare la qualità delle immagini e ridurre il rischio di errore.

VELAS LARGAS, HEALTH CARE EQUIPMENT

Rua Dr. António Martins, Número 44, 2º Esq, Benfica, Lisboa, na freguesia de São Domingos de Benfica, Portugal
Email: info@velaslargas.com
Website: www.velaslargas.com

HEALTH EDUCATION



The Company organizes specialized medical refresher courses for doctors, nurses, physiotherapists, radiology technicians, midwives, healthworkers, health psychologists.



VELAS LARGAS, HEALTH CARE EQUIPAMENT

Rua Dr. António Martins, Número 44, 2º Esq, Benfica, Lisboa, na freguesia de São Domingos de Benfica, Portugal

Email: info@velaslargas.com

Website: www.velaslargas.com



VELAS LARGAS
HEALTH CARE EQUIPAMENT

EMERGENCY MEDICAL TRANSPORT SECTOR

1. The Ambulance

EMERGENCY/AMBULANCE BOX on IVECO 4X4																			
BOX AMBULANCE CONVERSION EXAMPLE+TARGET		<table border="1"> <tr> <td>Modelo</td> <td>Descrição</td> <td>Preço</td> <td>Estado</td> </tr> <tr> <td></td> <td></td> <td></td> <td></td> </tr> </table>	Modelo	Descrição	Preço	Estado					<table border="1"> <tr> <td>Modelo</td> <td>Descrição</td> <td>Preço</td> <td>Estado</td> </tr> <tr> <td></td> <td></td> <td></td> <td></td> </tr> </table>	Modelo	Descrição	Preço	Estado				
Modelo	Descrição	Preço	Estado																
Modelo	Descrição	Preço	Estado																

DAILY 4X4 AMBULANCE CONVERSION SCENARIO																			
DAILY 4X4 AMBULANCE CONVERSION SCENARIO		<table border="1"> <tr> <td>Modelo</td> <td>Descrição</td> <td>Preço</td> <td>Estado</td> </tr> <tr> <td></td> <td></td> <td></td> <td></td> </tr> </table>	Modelo	Descrição	Preço	Estado					<table border="1"> <tr> <td>Modelo</td> <td>Descrição</td> <td>Preço</td> <td>Estado</td> </tr> <tr> <td></td> <td></td> <td></td> <td></td> </tr> </table>	Modelo	Descrição	Preço	Estado				
Modelo	Descrição	Preço	Estado																
Modelo	Descrição	Preço	Estado																

VELAS LARGAS, HEALTH CARE EQUIPAMENT

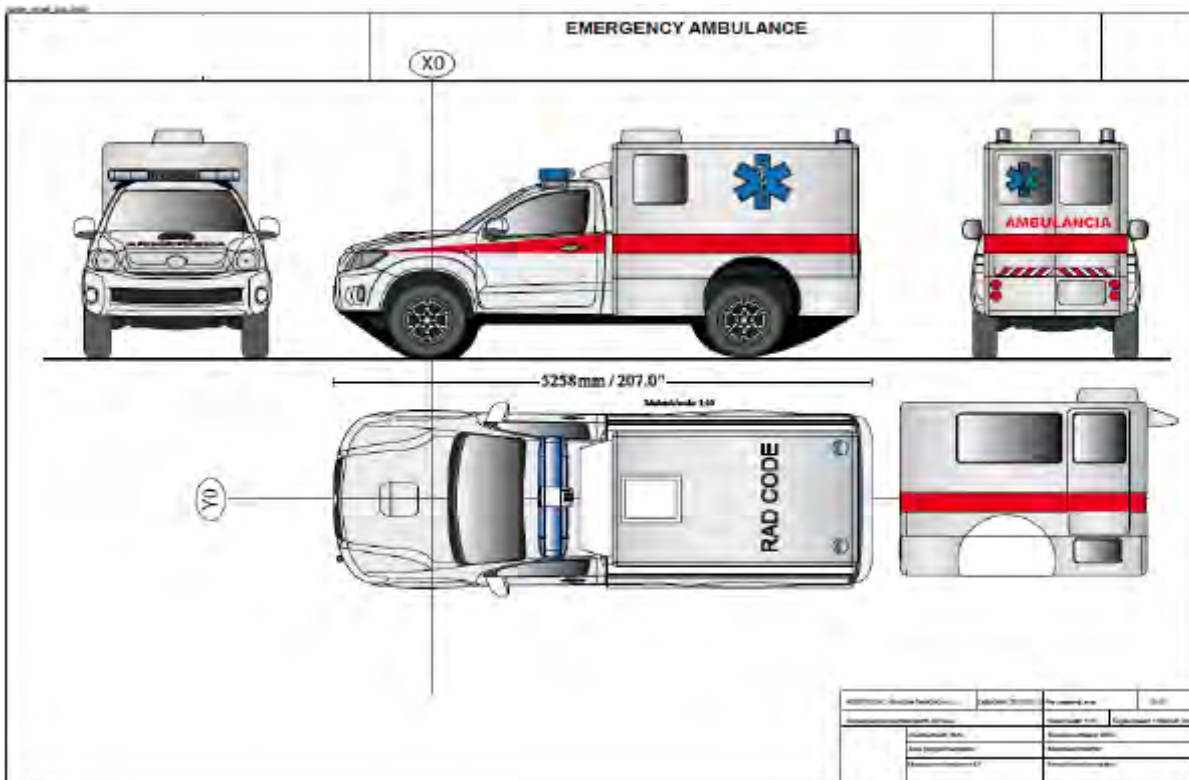
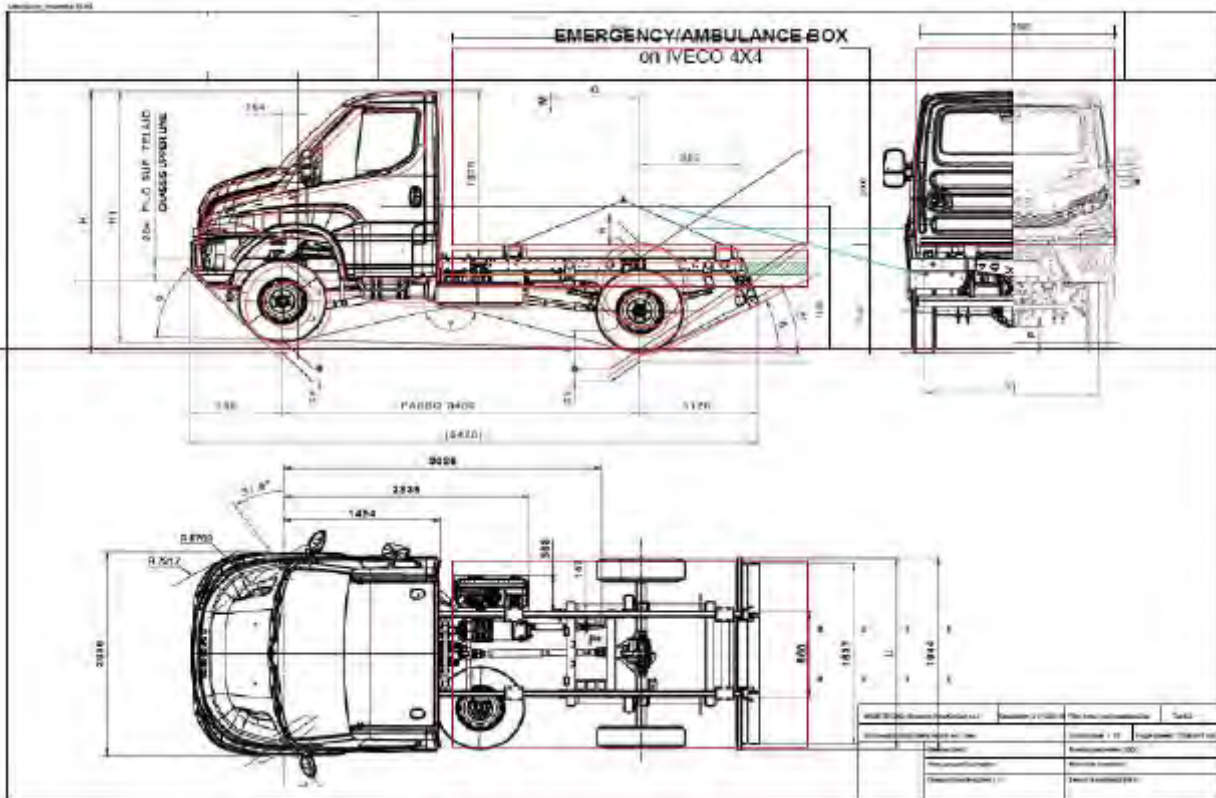
Rua Dr. António Martins, Número 44, 2º Esq, Benfica, Lisboa, na freguesia de São Domingos de Benfica, Portugal

Email: info@velaslargas.com

Website: www.velaslargas.com



VELAS LARGAS
HEALTH CARE EQUIPMENT



VELAS LARGAS, HEALTH CARE EQUIPMENT

Rua Dr. António Martins, Número 44, 2º Esq, Benfica, Lisboa, na freguesia de São Domingos de Benfica, Portugal
 Email: info@velaslargas.com
 Website: www.velaslargas.com



VELAS LARGAS
HEALTH CARE EQUIPAMENT

	EMERGENCY/AMBULANCE BOX on IVECO 4X4			
BOX AMBULANCE CONVERSION GENERAL INFO				

MATERIAL
Skins: GRP (Glass reinforced Plastic) G 700, nominal thickness 1,8 mm
Core: Styrofoam, density 40 kg/m3
Section: from 34 mm to 95 mm

A/C SYSTEM

MOBILITY

REINFORCEMENT
made with vertical aluminium tubular elements

CONNECTION
rounded connecting elements between the panels

subframe between vehicle and box with connecting elements adjustable

Modelo: IVECO 4X4	Dimensões (L x C x A): 3,00 x 1,90 x 2,10 m	Tipos de portas: 2 portas		
Capacidade de passageiros: 4	Capacidade de carga: 1.000 kg	Capacidade de armazenamento: 100 kg		
Consumo médio (litros/100km): 12,5	Consumo máximo (litros/100km): 18,0	Consumo mínimo (litros/100km): 8,0		
Velocidade máxima (km/h): 120	Velocidade mínima (km/h): 0	Velocidade média (km/h): 60		
Consumo em cidade (litros/100km): 15,0	Consumo em estrada (litros/100km): 10,0	Consumo misto (litros/100km): 12,5		

VELAS LARGAS, HEALTH CARE EQUIPAMENT

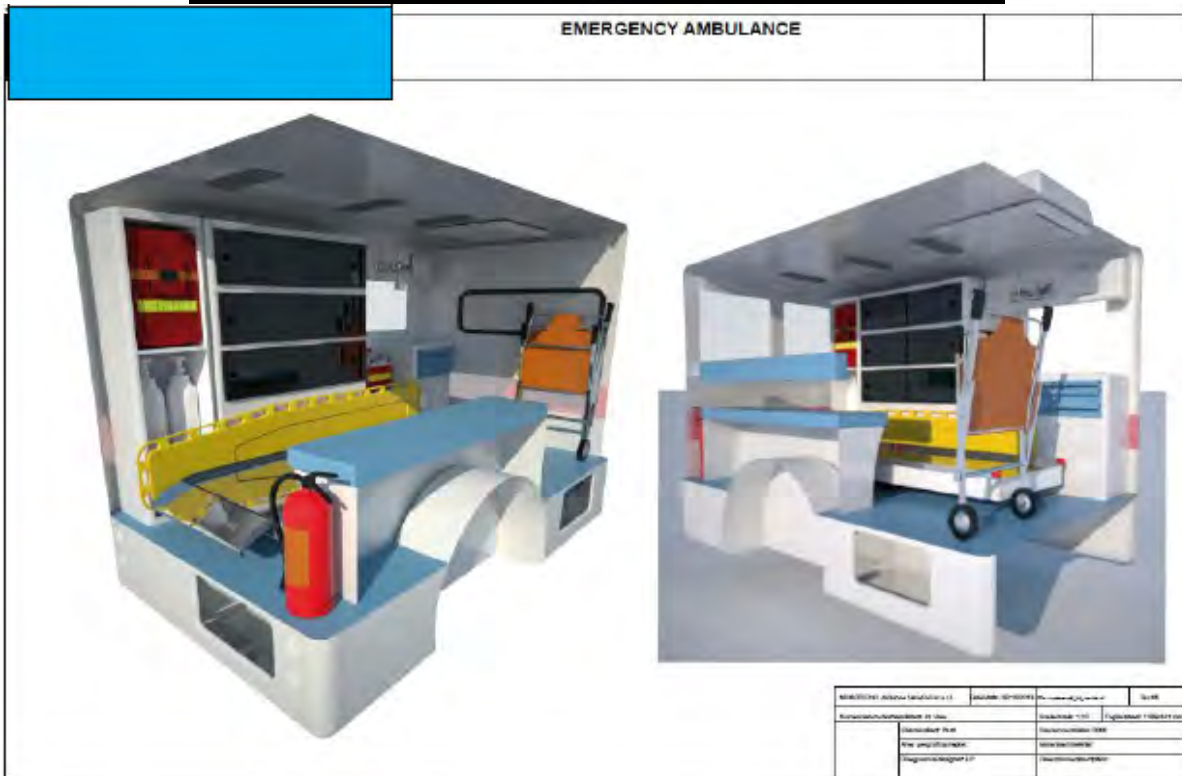
Rua Dr. António Martins, Número 44, 2º Esq, Benfica, Lisboa, na freguesia de São Domingos de Benfica, Portugal
Email: info@velaslargas.com
Website: www.velaslargas.com



VELAS LARGAS
HEALTH CARE EQUIPAMENT



EMERGENCY AMBULANCE



VELAS LARGAS, HEALTH CARE EQUIPAMENT

Rua Dr. António Martins, Número 44, 2º Esq, Benfica, Lisboa, na freguesia de São Domingos de Benfica, Portugal
 Email: info@velaslargas.com
 Website: www.velaslargas.com



VELAS LARGAS
HEALTH CARE EQUIPMENT



VELAS LARGAS, HEALTH CARE EQUIPMENT

*Rua Dr. António Martins, Número 44, 2º Esq, Benfica, Lisboa, na freguesia de São Domingos de Benfica, Portugal
Email: info@velaslargas.com
Website: www.velaslargas.com*



VELAS LARGAS
HEALTH CARE EQUIPAMENT



VELAS LARGAS, HEALTH CARE EQUIPAMENT

Rua Dr. António Martins, Número 44, 2º Esq, Benfica, Lisboa, na freguesia de São Domingos de Benfica, Portugal
Email: info@velaslargas.com
Website: www.velaslargas.com

2. THE CLINIC VAN

**THE OPERATING ROOM
THE OBSTETRICS AND GYNECOLOGY VAN**



VELAS LARGAS, HEALTH CARE EQUIPAMENT

Rua Dr. António Martins, Número 44, 2º Esq, Benfica, Lisboa, na freguesia de São Domingos de Benfica, Portugal

Email: info@velaslargas.com

Website: www.velaslargas.com



VELAS LARGAS
HEALTH CARE EQUIPAMENT



VELAS LARGAS, HEALTH CARE EQUIPAMENT

*Rua Dr. António Martins, Número 44, 2º Esq, Benfica, Lisboa, na freguesia de São Domingos de Benfica, Portugal
Email: info@velaslargas.com
Website: www.velaslargas.com*



VELAS LARGAS
HEALTH CARE EQUIPAMENT



VELAS LARGAS, HEALTH CARE EQUIPAMENT

Rua Dr. António Martins, Número 44, 2º Esq, Benfica, Lisboa, na freguesia de São Domingos de Benfica, Portugal
Email: info@velaslargas.com
Website: www.velaslargas.com



VELAS LARGAS, HEALTH CARE EQUIPAMENT

*Rua Dr. António Martins, Número 44, 2º Esq, Benfica, Lisboa, na freguesia de São Domingos de Benfica, Portugal
Email: info@velaslargas.com
Website: www.velaslargas.com*



VELAS LARGAS
HEALTH CARE EQUIPAMENT



VELAS LARGAS, HEALTH CARE EQUIPAMENT

Rua Dr. António Martins, Número 44, 2º Esq, Benfica, Lisboa, na freguesia de São Domingos de Benfica, Portugal
Email: info@velaslargas.com
Website: www.velaslargas.com

3. THE CROSS COUNTRY CLINIC



The multifunctional couch turns into a bed to allow x-ray and ultrasound examinations.

Results are immediately available to the physician and in the clinical record.



VELAS LARGAS, HEALTH CARE EQUIPAMENT

Rua Dr. António Martins, Número 44, 2º Esq, Benfica, Lisboa, na freguesia de São Domingos de Benfica, Portugal

Email: info@velaslargas.com

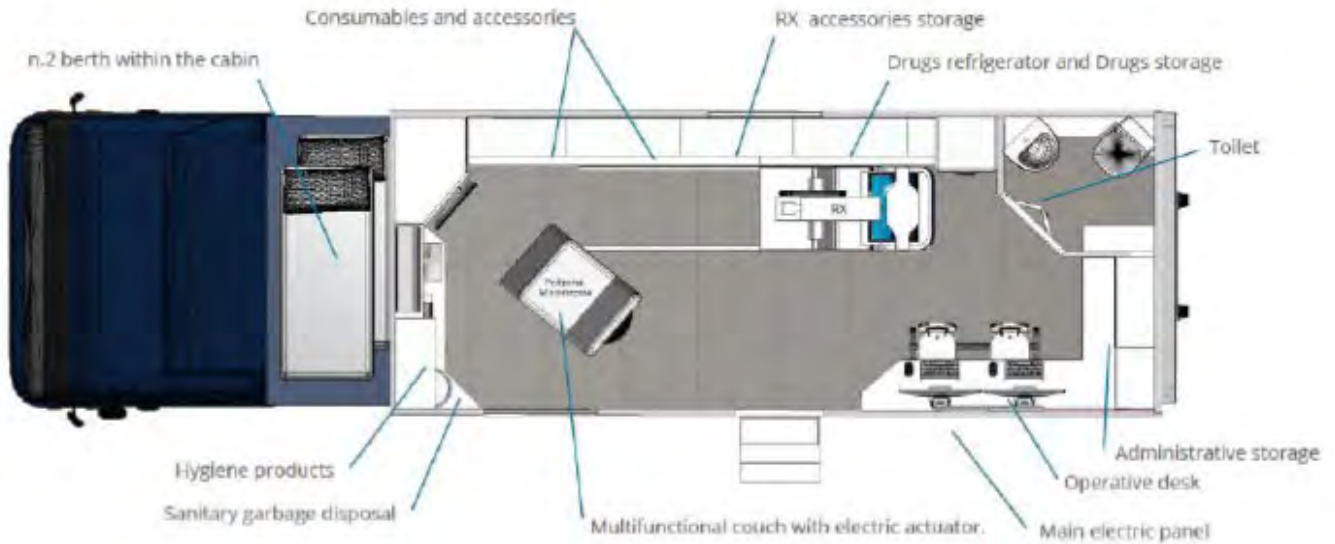
Website: www.velaslargas.com



VELAS LARGAS

HEALTH CARE EQUIPAMENT

The "CROSS COUNTRY" is a IVECO 6 wheels vehicle designed to also lodge 2 people, including: Diesel generator, stabilizer, satellite dish, water tank, air conditioning, black water tank.



Inside the "CROSS COUNTRY" there is a RHIS-PRO® booth equipped with monitor 40" Full HD Touch screen, card reader, webcam and medical with integrated microphone, multifunctional couch with electric actuator, and all following devices:

Dermatoscope video



Glucometer



Blood pressure



12-lead ECG



Ultrasound - MYLAB ONE GAMMA



RX GM60A SAMSUNG



3-lead ECG



Pulsa oximeter



Thermometer



Body scale



LabGeo PT-10



Urine Analysis



Digital Stethoscope



CBC Analysis



VELAS LARGAS, HEALTH CARE EQUIPAMENT

Rua Dr. António Martins, Número 44, 2º Esq. Benfica, Lisboa, na freguesia de São Domingos de Benfica, Portugal

Email: info@velaslargas.com

Website: www.velaslargas.com



VELAS LARGAS
HEALTH CARE EQUIPAMENT

The multifunctional couch turns into a bed to allow x-ray and ultrasound examinations.

Results are immediately available to the physician and in the clinical record.



VELAS LARGAS, HEALTH CARE EQUIPAMENT

Rua Dr. António Martins, Número 44, 2º Esq, Benfica, Lisboa, na freguesia de São Domingos de Benfica, Portugal
Email: info@velaslargas.com
Website: www.velaslargas.com



VELAS LARGAS
HEALTH CARE EQUIPAMENT



The drugs storage zone is provided with a refrigerator.

Pharmacy drawers and other furnitures give Cross Country the chance to distribute drugs and to be independent for more than a week.



VELAS LARGAS, HEALTH CARE EQUIPAMENT

Rua Dr. António Martins, Número 44, 2º Esq, Benfica, Lisboa, na freguesia de São Domingos de Benfica, Portugal

Email: info@velaslargas.com

Website: www.velaslargas.com



VELAS LARGAS
HEALTH CARE EQUIPAMENT



Multidoctor digital platform gives mobile care providers the ability to connect patient to physician for real-time tele-diagnosis.

It is possible to connect both to mobile and satellite.



All data acquired, transferred and stored on the platform are securely protected according to local regulatory (HIPAA, European health information privacy etc.)

VELAS LARGAS, HEALTH CARE EQUIPAMENT

Rua Dr. António Martins, Número 44, 2º Esq, Benfica, Lisboa, na freguesia de São Domingos de Benfica, Portugal

Email: info@velaslargas.com

Website: www.velaslargas.com

4. THE FARMACY VAN

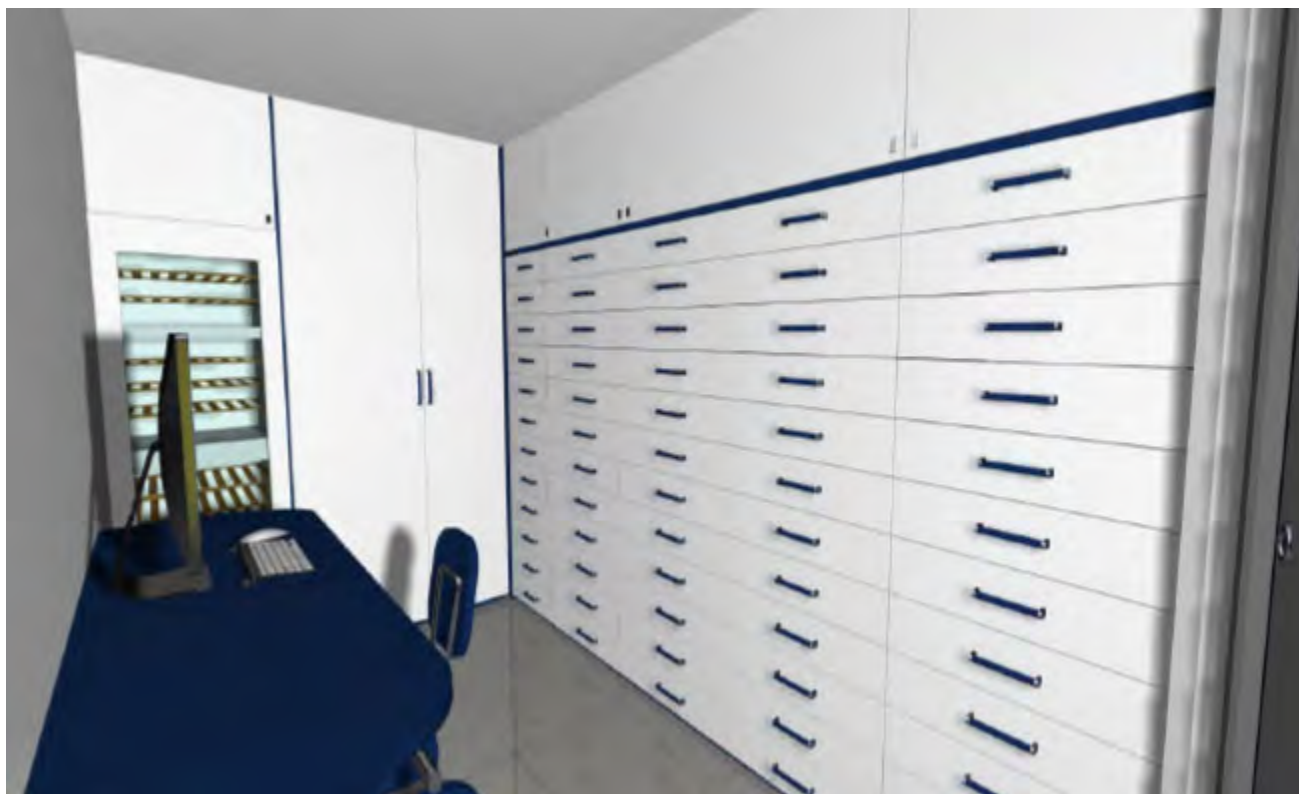


VELAS LARGAS, HEALTH CARE EQUIPAMENT

Rua Dr. António Martins, Número 44, 2º Esq, Benfica, Lisboa, na freguesia de São Domingos de Benfica, Portugal

Email: info@velaslargas.com

Website: www.velaslargas.com



5. THE AIR AMBULANCE



VELAS LARGAS, HEALTH CARE EQUIPAMENT

Rua Dr. António Martins, Número 44, 2º Esq, Benfica, Lisboa, na freguesia de São Domingos de Benfica, Portugal

Email: info@velaslargas.com

Website: www.velaslargas.com



VELAS LARGAS, HEALTH CARE EQUIPAMENT

*Rua Dr. António Martins, Número 44, 2º Esq, Benfica, Lisboa, na freguesia de São Domingos de Benfica, Portugal
Email: info@velaslargas.com
Website: www.velaslargas.com*



VELAS LARGAS
HEALTH CARE EQUIPAMENT



VELAS LARGAS, HEALTH CARE EQUIPAMENT

*Rua Dr. António Martins, Número 44, 2º Esq, Benfica, Lisboa, na freguesia de São Domingos de Benfica, Portugal
Email: info@velaslargas.com
Website: www.velaslargas.com*



VELAS LARGAS
HEALTH CARE EQUIPAMENT



VELAS LARGAS, HEALTH CARE EQUIPAMENT

*Rua Dr. António Martins, Número 44, 2º Esq, Benfica, Lisboa, na freguesia de São Domingos de Benfica, Portugal
Email: info@velaslargas.com
Website: www.velaslargas.com*



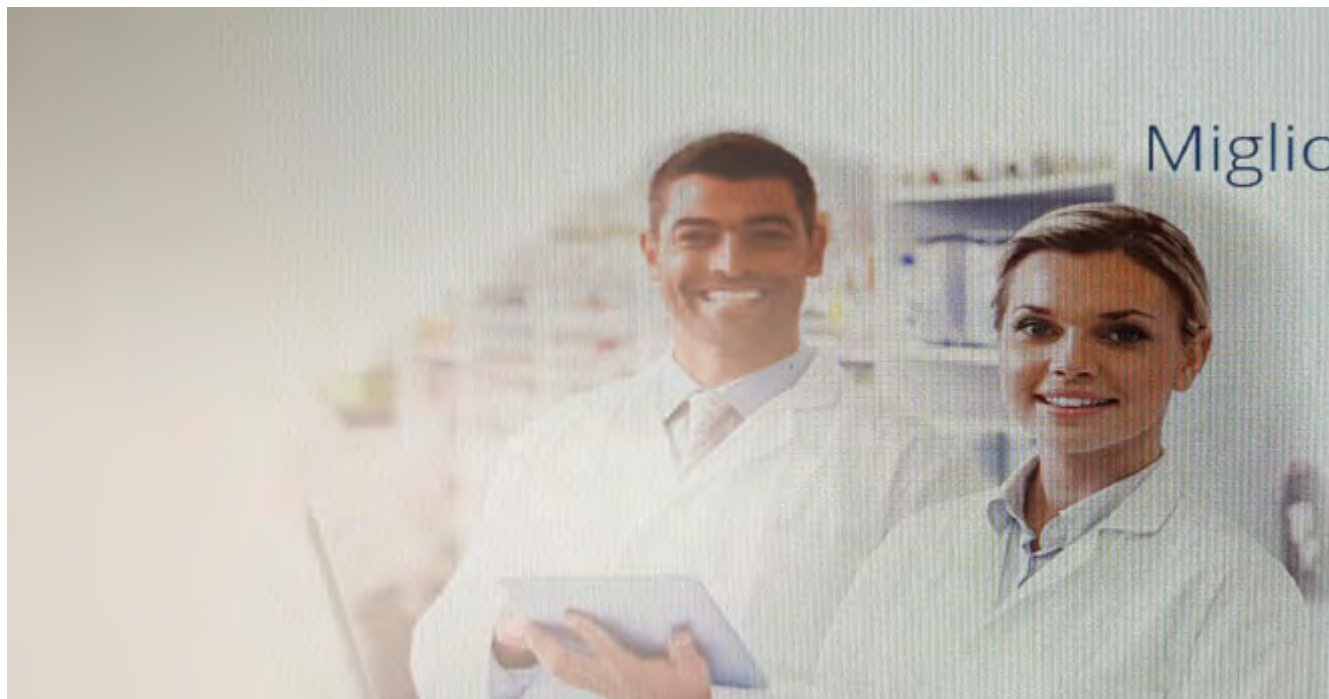
VELAS LARGAS
HEALTH CARE EQUIPAMENT



VELAS LARGAS, HEALTH CARE EQUIPAMENT

Rua Dr. António Martins, Número 44, 2º Esq, Benfica, Lisboa, na freguesia de São Domingos de Benfica, Portugal
Email: info@velaslargas.com
Website: www.velaslargas.com

6. THE SUPPLY OF MEDICINES



The Italian market leader among Pharmacists' Cooperative

Who we are

We were born on 1934
About 1.900 shareholders (pharmacies' owners)
More than 4.500 served pharmacies daily
2 Retail networks with 1.300 associated pharmacies
Net Assets: 84 millions
Turn over 2015: € 1.100 millions
SKUs: 80.000

Mission

To support shareholders' pharmacies with the best product and service supply

VELAS LARGAS, HEALTH CARE EQUIPAMENT

*Rua Dr. António Martins, Número 44, 2º Esq, Benfica, Lisboa, na freguesia de São Domingos de Benfica, Portugal
Email: info@velaslargas.com
Website: www.velaslargas.com*

Vision



Main Features

Cooperative System:

We are sure that a cohesive and motivated team obtains that a single, in loneliness, can't reach, because nobody wins in loneliness! The members of a winning group know that the results of 1+1 don't equal 2 but 3, as recently the Pope said talk about Cooperative.

In this way the group becomes an entity that goes beyond the total of single person's value

Tradition and innovation:

Our target is the continuous improvement through a progressive specialization and organization, keeping our origin and our history, maximizing the value.

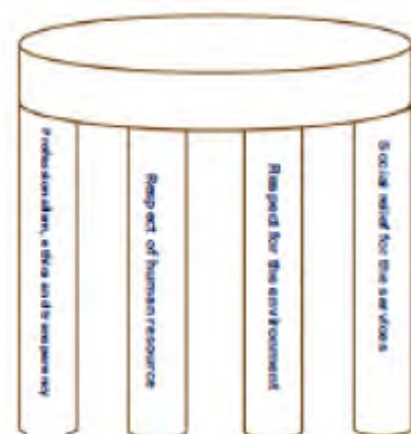
Social responsibility and transparency:

We are aware of the role we play at all levels and we interpret it better using an ethical and transparent approach. The company contributes to sustainable economic development of our country, working with local communities in which it works to improve the quality of life for all. For us, in the middle, there are the people, mutual respect and consistency towards all stakeholders.

Core Values

As a table, to be in perfect balance, rests on four legs, so the company is based on four core values that distinguish us from the birth:

- Professionalism, ethics and transparency
- Respect of human resources (employees, customers, suppliers)
- Respect for the environment
- Promotion of the social relief for the services by pharmacies to the community



VELAS LARGAS, HEALTH CARE EQUIPAMENT

Rua Dr. António Martins, Número 44, 2º Esq, Benfica, Lisboa, na freguesia de São Domingos de Benfica, Portugal

Email: info@velaslargas.com

Website: www.velaslargas.com

Main figures



Personnel



Constant growth

VELAS LARGAS, HEALTH CARE EQUIPAMENT

Rua Dr. António Martins, Número 44, 2º Esq, Benfica, Lisboa, na freguesia de São Domingos de Benfica, Portugal

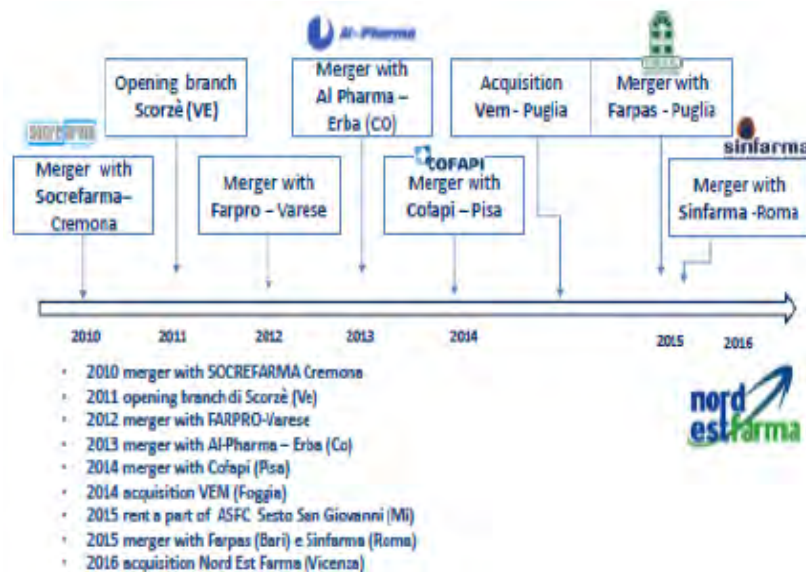
Email: info@velaslargas.com

Website: www.velaslargas.com



VELAS LARGAS

HEALTH CARE EQUIPAMENT



10 warehouses in Italy



Our networks

We represent a very important strategic opportunity for the members of the Cooperative, to better address the current challenges of the market.

Join our networks helps to strengthen the image and profitability of the pharmacy thanks to:

- The possibility to buy better and sell more, through a way of staff specialization and process efficiency
- Integrated range of professional certified services, guaranteed to customers

VELAS LARGAS, HEALTH CARE EQUIPAMENT

Rua Dr. António Martins, Número 44, 2º Esq, Benfica, Lisboa, na freguesia de São Domingos de Benfica, Portugal

Email: info@velaslargas.com

Website: www.velaslargas.com



A common vision that led:

To value the advice and increase customer relationship

- To deliver services with high professional content
- To use only validated equipment, scientifically recognized and with the help of certified professionals
- The best quality/price ratio both in product and service market offering

VELAS LARGAS, HEALTH CARE EQUIPAMENT

Rua Dr. António Martins, Número 44, 2º Esq, Benfica, Lisboa, na freguesia de São Domingos de Benfica, Portugal

Email: info@velaslargas.com

Website: www.velaslargas.com